

BronexTM VALVES

AN ISO 9001:2015 CERTIFIED COMPANY



YOUR SOLUTION PARTNER IN INDUSTRIAL VALVE AUTOMATION

BRONEX VALVES (AN ISO 9001:2015 CO.) Provide a one stop solutions for Valve and Valve Automation Systems under a one roof branded as “ BRONEX ”

We Established With An Objective To Offer Standard As Well As Tailor Made Optimum Solution In The Field Of Valve Industries

We Provide Complete Solution From Basic Concept To Final Commissioning Of All Types Of Requirements Related To Valves.

We Render Our Maximum Effort To Fulfill Customer Requirement In Achieving Best Quality , Deliver With Competitive Cost .

Our Company Is Helping Our Customers With Their Valve Automation Requirement. Our Automation Product For Valves Are Pneumatic Actuators, Electrical Actuators, Electro Pneumatic Valve Positioner, Limit Switches And Solenoid Valve And Our Valve Automation Products Are Pneumatic / Electrical Actuator Operated Ball Valves, Butterfly Valves, Plug Valves And Damper Valve In Different Moc With Different End Connection With Different Pressure Rating.

We supply Quality Valves Of Almost All Types For A Wide Spectrum Of Users In The Process & Chemical, Refineries & Petrochemicals, Fertilizers, Drugs & Pharmaceuticals, Thermal Power Stations, Nuclear & Atomic Power Stations, Textiles, Dyes & Intermediates, Paints & Varnishes, Sugar, Breweries & Distilleries, Soaps & Detergents, Steel Plants, Food & Oil Industry, Solvent Extraction Plants, Sewage, Effluent & Water Treatment, Cooling Water, Ship Yards And Marine Management, Water Works, Pulp & Paper, Lpg Bottling Plants, Onshore & Offshore Platforms, Slurry & Ash Handling.

The Aim Of Our Organization Is Customer Satisfaction Which Is Achieved Through Following Objectives:

Innovation, Commitment To Quality, Technological Solutions. On Time Delivery. After Sales Service. Our Challenge Is To Meet The Widely Ranging Delivery Demands Of An Equally Diverse Customer Base Coupled With Constant Up Gradation Of Production Equipment And Techniques To Keep Pace With New Market Trends And Applications.

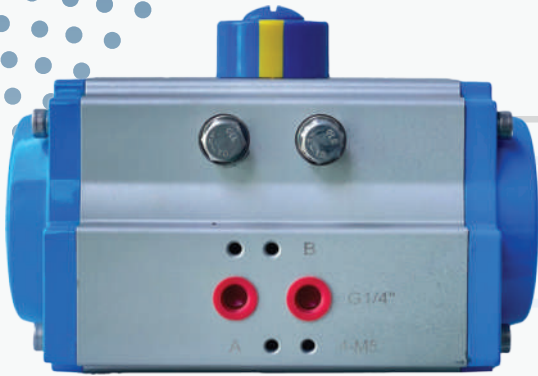
Quality Policy

Bronex launched high technological product like pneumatic / electrical actuator operated ball valve, butterfly valve, plug valve and damper valve and accessories like limit switch, positioner and solenoid valve etc.

We strive enhance customer satisfaction through high quality product delivered to customer through quality management system as per ISO 9001:2015 standards.

We compliance all statutory and regulatory requirements as well as customer requirement fulfilment.

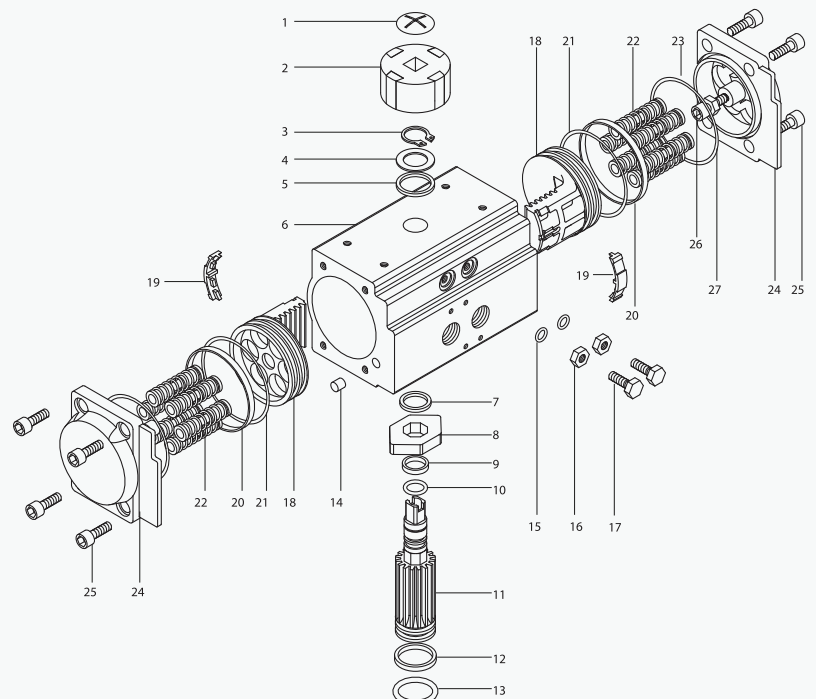
PNEUMATIC ACTUATOR FEATURES



- 1. Hard Anodized Barrel / Body** to Protect from Hazardous atmosphere & corrosion, which enhance life of actuator.
- 2. Namur Standard Pinion Top** (An International Standard) The pinion (shaft) top drilled and slotted for easy assembling of switch, positioners and other accessories.
- 3. Namur pad for Solenoid Valve** (An International Standard) Air supply ports are Include On Body as per NAMUR standard to facilitate direct mounting of solenoid valve at actuator.
- 4. ISO 5211 Standard Mounting for Valve** (An International Standard) Double bottom drilling for actuator to valve Assembling & centering. Designed for strength and easy mounting or interchangeability
- 5. ISO-5211 Standard Pinion Bottom** (An International Standard) Bottom of the pinion (Shaft) as female key, double square hole for assembling on valves with square key stem and in line or turned to 45°. Designed for strength & sure-fix with stem
- 6. Sliding Skates:** The innovation for replaceable sliding skates, between Pistons (Racks) and internal bore surface of the Actuator, just to avoid metal contact, which enhances the Actuator life
- 7. Compact Design:** "Bronex" Actuators are designed as compact double acting which offers high torque values. Internal sliding surface, lapped and anodized for minimum friction and long life of actuator..

PARTS DETAILS PNEUMATIC ACTUATOR

NO.	Description	Qty	STANDARD MATERIAL
01	Indicator Screw	1	Plastic
02	Indicator	1	Plastic
03	Spring Clip	1	Stainless Steel
04	Thrust Washer	1	Stainless Steel
05	Outside Washer	1	engineering plastics
06	Body	1	Extruded alluminum alloy
07	Inside Washer	1	engineering plastics
08	Cam	1	Alloy steel
09	O-Ring (Pinion Top)	1	NBR
10	Bearing (Pinion Top)	1	engineering plastics
11	Pinion	1	Alloy steel
12	O-Ring(Pinion Bottom)	1	engineering plastics
13	Bearing (Pinion Bottom)	1	NBR
14	Plug	2	NBR
15	O-Ring (Adjust Screw)	2	NBR
16	Nut (Adjust Screw)	2	Stainless Steel
17	Adjust Screw	2	Stainless Steel
18	Piston	2	Cast alluminum/casting
19	Guide (Piston)	2	engineering plastics
20	Bearing (Piston)	2	engineering plastics
21	O-ring(Piston)	2	NBR
22	Spring	0-12	Stainless Steel
23	O-Ring(End Cap)	2	NBR
24	End Cap	2	Cast alluminum
25	Cap Screw	8	Stainless Steel
26	Stop Screw	2	Stainless Steel
27	Nut (Stop Screw)	2	Stainless Steel

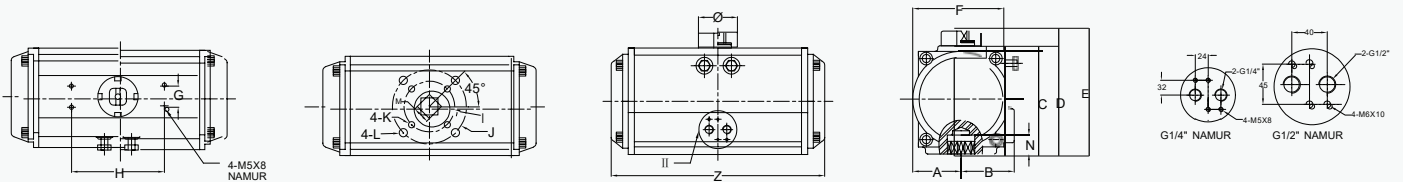


OUTPUT TORQUE CHART FOR DOUBLE ACTING ACTUATOR (NM)

Model	Air Supply Pressure (Unit:bar)									
	2	2.5	3	4	4.5	5	5.5	6	7	8
DA32	3	4	5	6	7	8	8	9	11	12
DA40	5	6	7	10	11	12	13	14	17	19
DA52	8	10	12	16	18	20	22	24	28	32
DA63	15	18	22	29	33	36	40	44	51	58
DA75	20	25	30	40	45	50	55	60	70	80
DA83	31	39	47	63	70	78	86	94	110	125
DA92	45	56	68	90	102	113	124	135	158	181
DA105	66	83	99	132	149	165	182	198	231	264
DA125	100	125	150	200	226	251	276	301	351	401
DA140	171	214	256	342	385	427	470	513	598	684
DA160	266	332	399	532	598	665	731	798	931	1064
DA190	426	532	638	851	958	1064	1170	1277	1490	1702
DA210	532	665	798	1064	1197	1330	1463	1596	1862	2128
DA240	769	962	1154	1539	1731	1924	2116	2308	2693	3078
DA270	1170	1462	1754	2339	2632	2924	3216	3509	4094	4679
DA300	1526	1908	2289	3052	3434	3815	4197	4578	5341	6104
DA350	2285	2856	3427	4570	5141	5712	6283	6854	7997	9139
DA400	3256	4070	4884	6512	7326	8140	8954	9768	11396	13024

OUTPUT TORQUE CHART FOR SINGLE ACTING ACTUATOR (NM)

Actuator Model	Spring Quantity	Air Pressure Torque										Spring Return Torque	
		4 Bar		5.0 Bar		6.0 Bar		7.0 Bar		8.0 Bar			
		0' Start	90' End	0' Start	90' End	0' Start	90' End	0' Start	90' End	0' Start	90' End	0' Start	90' End
SA052	10	7.4	3.6	11.5	6.7	15.5	11.6	19.5	15.6	/	/	12.4	8.5
SA063	10	1.4	8.2	22.8	15.6	30	22.8	37.3	30.1	44.7	37.4	20.9	13.7
SA075	10	19	111	28.8	21.2	39	31.2	49.1	41.2	59.1	51.2	29	21.1
SA083	10	31	166	46.7	32.3	62.4	48	78.1	63.7	93.8	79.3	46	31.6
SA092	10	43.6	21.5	66.2	44.1	88.8	66.7	111.3	89.2	134	11.8	68.7	46.7
SA105	10	68.9	33.4	102	66.5	135.1	99.6	161.8	123.1	201.2	165.7	98.4	63.3
SA125	10	96	44	146	94	196	144	247	194	297	245	157	105
SA140	10	170	84	226	169	314	255	427	340	512	426	258	172
SA160	10	253	115	386	248	519	381	652	514	785	647	417	279
SA190	10	451	233	664	446	877	658	1090	871	1302	1084	618	400
SA210	10	514	304	780	570	1046	836	1312	1102	1578	1368	760	550
SA240	10	718	431	1103	816	1488	1201	1872	1586	2257	1970	1108	821
SA270	10	1220	767	1805	1352	2390	1937	2974	2521	3560	3107	1572	1119
SA300	10	1430	695	2355	1692	2956	2221	3719	2984	4482	3747	2122	1460
SA350	10	1963	787	3105	1929	4247	3071	5390	4214	6532	5356	3405	2346
SA400	10	3012	1025	4640	2653	6268	4281	7895	5908	9523	7536	4938	3149



PNEUMATIC ACTUATOR DIMENSION

	A	B	C	D	E	F	G	H	I	J	K	L	M	N	Z	B
AT32	25	25			70											110
AT42	30	39			80											122
AT52	30	42	65.5	72	95	65	30	80	Ø36	Ø50	M5X8	M6X10	11	14	153	NAMUR G1/4"
AT63	36	47	84	89	107.5	72	30	80	Ø50	Ø70	M6X10	M8X13	14	18	174	NAMUR G1/4"
AT75	36	47	84	94	126	85	30	80	Ø50	Ø70	M6X10	M8X13	14	21	189	NAMUR G1/4"
AT83	46	57	98.5	108.7	128.7	92	30	80	Ø50	Ø70	M6X10	M8X13	17	21	215	NAMUR G1/4"
AT92	46	57	98.5	108.7	128.7	92	30	80	Ø50	Ø70	M6X10	M8X13	17	21	248	NAMUR G1/4"
AT105	57.5	64	122.5	133	153	109.5	30	80	Ø70	Ø102	M8X13	M10X16	22	26	278	NAMUR G1/4"
AT125	67.5	74.5	145.5	160	175	127.5	30	130	Ø70	Ø102	M8X13	M10X16	22	26	308	NAMUR G1/4"
AT140	75	77	161	172	192	137.5	30	130	Ø102	Ø125	M10X16	M12X20	27	31	400	NAMUR G1/4"
AT160	87	87	184	197	217	158	30	130	Ø102	Ø125	M10X16	M12X20	27	31	465	NAMUR G1/4"
AT190	103	103	216	230	260	189	30	130		Ø140		M16X20	36	50	550	NAMUR G1/4"
AT210	113	113	235.5	255	285	210	30	130		Ø140		M16X20	36	50	550	NAMUR G1/4"
AT240	115	115	265	295	355	260	30	130		Ø165		M16X20	46	60	601	NAMUR G1/4"
AT270	130	130	305	340	390	320	30	130		Ø165		M16X20	46	60	730	NAMUR G1/4"
AT300	162	174	310	345	395	334	30	130		Ø165		M20x25	46	60	778	NAMUR G1/2"

1. SUMMARISE

BRX SERIES Fine small electric actuator is used to control 0°~270° rotating valves and other similar products, such as butterfly valve, ball valve, baffle valve, plug valve, shutter valve, etc., can be widely used in petroleum, chemical industry, water treatment, shipping, paper, power station, heating, light industry and other industries. It takes 380V/220V/110V AC power supply as the driving power, 4-20mA current signal or 0-10V DC voltage signal as the control signal, can make the valve valve movement to the required position, achieve its automatic control, the maximum output torque up to 2000nm.



ON/OFF Type Electric Actuator



Modulating Type Electric Actuator



Intelligent Control Type Electric Actuator

2. PERFORMANCE FEATURE

1.1 Shell

The case is hard aluminum alloy, anodized and coated with polyester powder, strong corrosion resistance, IP67, NEMA4 and 6, and IP68 type is available.

1.2 Electrical machinery

Fully enclosed squirrel cage motor, small volume, large torque, small inertia force, F grade insulation, built-in heat protection switch, can prevent damage to the motor.

1.3 Manual structure

The design of the handle ensures safety, reliability, labour saving and small volume. When the power is not on, pull the handle for manual operation. When manual operation is not needed, put the spanner in the spanner holder for convenient use.

1.4 Indicator

The indicator is mounted on the center shaft to allow observation of valve position. Convex lens design, no water, more convenient to observe.

1.5 Dryer

Used to control temperature, prevent condensation of moisture within the actuator due to temperature and weather changes, and keep internal electrical components dry.

1.6 Seal

Good sealing, standard product protection grade IP67, and optional IP68 protection grade.

1.7 limit switch

Mechanical and electronic double limit. Mechanical limit screw adjustable, safe and reliable; The electronic limit switch is controlled by the CAM mechanism. The simple adjusting mechanism can set the position precisely and conveniently, and is not affected by the excessive hand wheel.

1.8 self-locking

Precision worm mechanism can transmit high torque, high efficiency, low noise (maximum 50 dB), long life; It has self-locking function to prevent reversal, and the transmission part is stable and reliable without refuelling.

1.9 Overhand bol

When the housing is removed, the bolts are attached to the housing and will not fall off.

1.10 Install

The installation size at the bottom is in accordance with ISO5211/DIN3337 international standard, the hole is double square for linear or 45° Angle installation of the valve with square stem, strong adaptability. It can be installed vertically or horizontally.

1.11 Circuit

The control line conforms to the standard of single-phase or three phase power supply, the layout of the line is compact and reasonable, and the wiring terminal can effectively meet the requirements of various additional functions.

3. PERFORMANCE

Model	Maximum Output Torque		Actuation Time 90°	Output Shaft	Motor	Single Phase Rated Current	Hand Wheel Speed		Weight
	N·M	S					N	Kg	
BRX-003	30	30		1"11	10	0.2	10	2.1	
BRX-005	50	30		14X14 Ø 20	10	0.25	10	3.6	
BRX-008	80	30		14X14 Ø 20	15	0.25	7.5	3.6	
BRX-010	100	30/40		17X17 Ø 20	15	0.25	7.5	4.6	
BRX-015	150	30/40		17X17 Ø 25	45	0.37	48	4.6	
BRX-020	200	30		27X27 Ø42	45	0.3	48	13	
BRX-030	300	30		27X27 Ø42	60	0.31	48	13.4	
BRX-040	400	30		27X27 Ø42	90	0.33	48	13.8	
BRX-060	600	30		27X27 Ø42	180	0.33	48	14	
BRX-080	800	45		27X27 Ø42	180	0.47	130	14.3	
BRX-100	1000	135		Max Ø 65	180	0.47	130	60	
BRX-160	1600	135		Max Ø 65	180	0.85	130	60	
BRX-200	2000	135		Max Ø 65	180	0.80	130	60	

4. STANDARD TECHNICAL PARAMETERS

Shell	Aluminum alloy housing, waterproof grade: IP67, And6	
Motor power	110/220V 1Phase, 380/440V AC 3Phase, 50/60Hz, ±10%	
Control Power	110/220V AC 1Phase, 50/60Hz, ±10%	
Motor	Squirrel-cage induction motor	
Limit switch	2X ON / OFF , SPDT, 250V AC 10A	
Auxiliary limit switch	2X ON / OFF , SPDT, 250V AC 10A	
Journey	90°~270°±10° (Above 90° please state in advance)	0°~270°
Failure protection/ operating temperature	Built-in heat protection, Open120°C ± 5°C/Close97°C ± 15°C	
Indicator	Continuous position indication	
Manual manipulation	Mechanical handle (Optional handwheel)	
Self-lock device	Worm gear and worm mechanism provide self - locking	
Mechanical limit	2 External adjusting bolts	
Dryer	7-10W (110/220V AC) The condensation	
Wiring hole	2 Pieces M18	
Environment temperature	-20°C ~+70°C	
oiling	Aluminium base grease (EP type)	
Materials	Steel, Aluminium alloy, Aluminium bronze, Polycarbonate	
Ambient humidity	Max 90%RH	
Seismic performance	X Y Z 10g, 0.2°34Hz, 307	
The outer coating	Dry powder, epoxy polyester	

1. SUMMARISE

NEX series electric actuators are used to control 0°~270° rotating valves and other similar products, such as butterfly valve, ball valve, damper, baffle valve, plug valve, shutter valve, etc. It can be widely used in petroleum, chemical industry, water treatment, ship, papermaking, power station, heating, building control, light industry and other industries. It takes 380V/220V/ AC as the driving power and switch signal or analog signal (4-20mA, 1-10V DC, 1-5V DC) as the control signal to make the valve move to the desired position and realize its automatic control. This product has obtained CE and explosion-proof certification, and the product quality is guaranteed.



**ON/OFF Type
Electric Actuator**



**Intelligent Control Type
Electric Actuator**

2. PERFORMANCE FEATURE

2.1 Motor

The motor is a fully enclosed squirrel cage motor with small volume and small inertia force. The insulation grade is F class. The built-in overheat protection switch can prevent the motor from being damaged when the motor is blocked by the electric actuator.

2.2 Hand-operating mechanism

Handwheel design to ensure safety and reliability, labor saving, small volume. When the power is not on, pull the clutch handle for manual operation. When powered on, the clutch will reset automatically. (Note: In the case of no power on the motor, the electric actuator will remain in a permanent manual state.)

2.3 Indicator

The indicator is mounted on the center shaft to allow observation of valve position. Tempered glass is used in mirror surface, which has the characteristics of safety, high strength and good thermal stability.

2.4 Dryer

A heated dehumidifier is used to prevent condensation of moisture within the actuator due to ambient temperature changes and to keep internal electrical components dry.

2.5 Limit switch

Mechanical and electronic double limit. The mechanical limit screw can be adjusted according to the actual Angle of the valve, which is safe and reliable. The electronic limit switch is controlled by the CAM mechanism, which can set the position of the electronic control valve accurately and conveniently.

2.6 The torque switch

Torque switch can provide overload protection, automatically disconnect the motor power when the valve is stuck, and output over-torque alarm indication, can effectively protect the valve and electric actuator from damage. (It has been set before delivery. Please do not adjust it at will.)

2.7 Self-locking

Precise double worm gear and worm mechanism can transmit high torque, high efficiency, low noise, long life, stable and reliable, with self-locking function to prevent inertia transmission and reverse flow.

2.8 Circuit

The control line conforms to the standard of single-phase or three-phase power supply, the layout of the line is compact and reasonable, and the wiring terminal can effectively meet the requirements of various additional functions.

2.9 Intelligent module

The intelligent module adopts the control panel which is mixed with the analog circuit and the single chip microcomputer with high integration and low power consumption, and also adopts the all-metal plug-in installation, which makes the actuator motor heat source effectively isolated from the control module and greatly improves the stability of the control module.

2.10 Automatic phase sequence adjustment

Intelligent regulator can automatically detect the phase sequence of the connected three-phase power supply without the user considering the phase sequence of the three-phase power supply.

TECHNICAL STANDARD PARAMETERS

Shell	Protection level IP67
The motor Power	Standard : AC220V single-phase 50/60Hz ± 10% Optional : AC380V three-phase 50/60Hz ± 10%, DC24V
Motor	Squirrel-cage induction motor
Limit switch	Open/close one each SPDT AC250V/16A
Auxiliary limit switch	Open/close one each SPDT AC250V/16A
The torque switch	Open/close one each SPDT AC250V/16A
Travel	90° ± 10%
Motorschutz	Built-in heat protection switch, 115°C ± 5°C on/off 97°C ± 5°C
Indicator	A continuous position indicating scale
Manual manipulation	Mechanical clutch mechanism with hand wheel operation
Self-lock device	Worm gear and worm mechanism provide self-locking
Mechanical limit	Two external adjusting bolts
Heat the dehumidifier	25W (110/220V AC)
Wiring hole	Two PF 3/4"
Environment temperature	-20°C = +70°C
Environment humidity	> 90% RH (no condensation)
Oiling	Aluminium base lubricating oil
Materials	Steel, Aluminum alloy, Aluminum bronze, Polycarbonate
Anti-seismic property	X Y Z 10g, 0.2 = 34Hz, 30
Surface coating	Dry powder (Epoxy resin)

PERFORMANCE

Model	Maximum output torque (N.M)	90° Travel time (S)	Motor power (W)	Rated current (A)		Turn the hand wheel number
				AC220V	AC380V	
NEX-010	100	18/22	25	0.55	≤0.1	10
NEX-015	150	18/22	40	0.9	≤0.1	10
NEX-020	200	21/25	40	0.9	≤0.1	11
NEX-030	300	21/25	60	1.0	0.3	11
NEX-040	400	26/31	90	1.2	0.55	14
NEX-050	500	26/31	90	1.2	0.55	14
NEX-060	600	26/31	120	1.9	0.6	14
NEX-080	800	26/31	120	1.9	0.6	18
NEX-090	900	31/37	180	2.4	1.2	18
NEX-100	1000	31/37	200	2.6	1.4	18
NEX-200	2000	93/112	200	2.6	1.4	50



1. GENERAL

The YT-1000 Series Positioner, mounted on a pneumatic actuator, moves the actuator by receiving DC 4-20mA signals from a controller. Also, the function of detecting and returning the actuator displacement provides accurate positioning in response to DC 4-20mA signals. The YT-1000 Series Electro-pneumatic positioner can be used with both spring return and double acting actuators.

3. TECHNICAL DATA

Description	Model		YT-1000R	
	YT-1000L		Rotary	
	Single	Double	Single	Double
Input signal	4-20mA DC			
Impedance	250±15Ω			
Supply pressure	1.4-77kgf/cm ² (20-100psi)			
Stroke	10-150mm		0-90°	
Air connection	PT(NPT) 1/4			
Gauge connection	PT(NPT) 1/8			
Conduit	PF 1/2(G1/2)			
Explosion proof	Exdm II B(C)T6 Exia II BT6			
Protection	Ip66			
Ambient temperature	-20°C~70°C (-4~158°F)			
Linearity	±1%F.S. ±2%F.S.			
Hysteresis	±1%F.S.			
Sensitivity	±0.2%F.S. ±0.5%F.S.			
Repeatability	±0.5%			
Air consumption	3LPM(Sup=1.4kgf/cm ² , 2 ⁰ psi)			
Flow capacity	8 ⁰ LPM(Sup=1.4kgf/cm ² , 2 ⁰ psi)			
Material	Aluminum alloy			
Weight	2.7kg(6lb)		2.8kg(6.2lb)	

2. FEATURES

- ⇒ High anti-vibration (none effective in 5-200Hz)
- ⇒ The linking of air duct is perforated form, convenient for the linking in all direction.
- ⇒ Convenient for the transform of positive action and counteraction.
- ⇒ 1/2split range available by simple adjustments without changing parts.
- ⇒ Simple structure for feedback connection.
- ⇒ Economical energy saving.

ORDERING SYMBOLS

YT-1000

	Actuator	Acting Type	Explosion proof	Lever type		Pilot valve vent Actuator volume	Option
				Linear	Rotary		
YT-1000	L Linear	S Single	M Exdm II Bt6	10-40mm	M6x40L	< 90cm ²	None
	R Rotary	D Double	C Exdm II Ct6	40-70mm	M6x63L	90-180cm ²	+PTM(Internal)
			I Exia II Bt6	70-100mm	M8x40L	>180cm ²	+PTM(External)
			N Non-Explosion	100-130mm	M8x63L		+L/S(Internal)
				130-150mm	NAMUR		NAMUR
							+PTM+L/S(Internal)

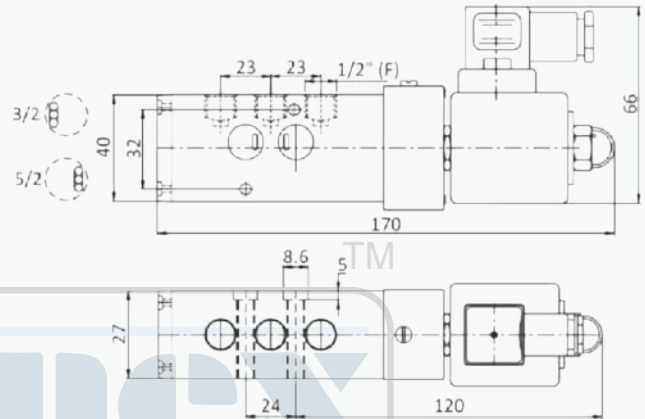
NAMUR SOLENOID VALVE (SUTABLE FOR SINGLE/DOUBLE ACTING ACTUATOR)



FEATURES

- ⇒ Easy replacement of coil as both AC and DC type use same Enclosure
- ⇒ Can test the operation in manual switch without power source
- ⇒ High durability as valve body is pneumatic pressure operating type
- ⇒ Can be directly mounted on an actuator (Namur design)
- ⇒ Ideally suited for spring return actuator for on/off duty dust cap fitted on exhaust ports
- ⇒ Interchangeable of AC and DC coils Ip65
- ⇒ Manual over ride switch

Technical Specification	
Coil Volatage	230 V AC, 24 V DC, 110 V AC All std,
Frequency	50-60 Hz
Connection	¼" NPT
Condulet	PF ½"
Coil insulation grade	Class "F"
Ambient Temp.	-20°C ~ 70°C
Body material	Aluminium
Seals	NBR
Working Pressure	Upto 10 BAR



LIMIT SWITCHES



APL-2N



APL-3N



APL-4N

STANDARD SPECIFICATION

Model	APL -2N Series	APL -3N Series	APL -4N Series
Description			
Enclosure	Weatherproof IP67	Weatherproof IP67	Weatherproof IP67 Explosionproof E EX d IIB T6
Cable entries	Two NPT 1/2"	Two NPT 1/2"	Two NPT 3/4"
Ambient temperature	-20°e 80 °C	-20°e 80 °C	-20°e 80 °C
Terminal strips	8 points (Q08-2.5mm ²)	8 points (Q08-2.5mm ²)	8 points (Q08-2.5mm ²)
Position Indicator	0 - 90 (90 turn free join) closed: red open: yellow	0 - 90 (90 turn free join) closed: red open: yellow	0 - 90 (90 turn free join) closed: red open: yellow
Switches	Mechanical switch x2 proximity sensor x2	Mechanical switch x2 proximity sensor x2	Mechanical switch x2 proximity sensor x2
Painting	Chromate Polyester powder coating (black)	Chromate Polyester powder coating (black)	Chromate Polyester powder coating (black)

FEATURES

- ⇒ Solid and flexible design
Aluminum die-casting housing and powder coating.
- ⇒ Bolts on visual position indicator
- ⇒ Quick-view spring loaded splined cam.
No need to adjust again after initial setting.
Easy setting without tool
- ⇒ Dual cable entries
- ⇒ Easy mounting bracket
NAMUR standard stainless steel shaft and bracket.



BRONEX OFFERS ISO 5211 Standard Pneumatic Actuator operated Investment Casting WCB/CF8/CF8M/CF3M Ball Valve in 3pcs/2pcs design. Engineered for multiple On/Off Operation in the down stream.

Size Range: 1/2" to 8" (15 MM to 200 MM)

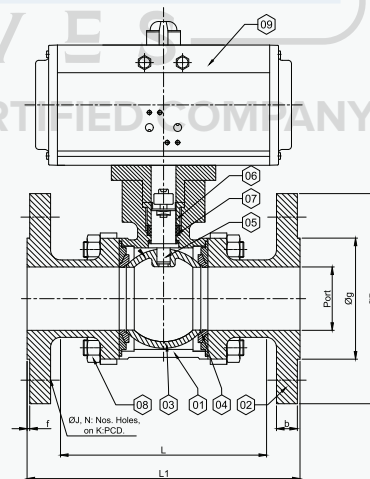
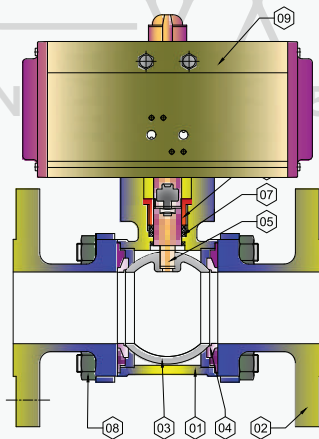
Ball Valve Specification	
Design And Manufacturer	ASME B16.34/BS EN ISO 17292
Valve Face to Face Dimensions	ASME B16.10
Flange Standard Conformity	ASME B16.5 Class 150/300
Inspection & Testing	API 598

Item	Type of Test	Testing Pressure	Working Pressure
Actuator	Pneumatic (Bubble test)	115 PSIG	60 to 115 PSIG
Valve Body Screwed	Hydraulic	450 PSIG	315 PSIG
Valve Body Flanged 150%	Hydraulic	450 PSIG	315 PSIG

ACCESSORIES

- ⇒ On/Off Indicator
- ⇒ Namur Standard Solenoid Valve in all Standard Coil Voltage (Flameproof Coil On Request)
- ⇒ Pneumatic & Electro - Pneumatic Valve Positioner
- ⇒ Declutchable Manual Over-Ride
- ⇒ Limit Switch for On/Off Indicator at panel Board
- ⇒ Filter + Regulator Combination with Pressure Gauge
- ⇒ Air Lock Valve

No.	Description	Material
1	Body	WCB / SS304 / SS316
2	End Connector	WCB / SS304 / SS316
3	Ball	SS304 / SS316
4	Ball Seat	PTFE / CFT / GFT
5	Stem Pin	AISI 410 / SS304 / SS316
6	Gland With Bush	SS 304
7	Stem Seat	PTFE / CFT / GFT
8	Stud & Nut	M.S. / S.S
9	Double Acting Pneumatic Actuator	Aluminum Pressure Die Cast



FLANGE END 150#

Valve Size	Port	L1	L	ØD	b	Øg	f	ØJ	N	PCD
Tolerance	±1mm	±3mm	64	±2mm	±2mm	±1mm				±1.5mm
1/2" (15mm)	13	108	70	90	8	34.9	2	15.9	4	60.3
3/4" (20mm)	19	117	88	100	8.9	42.9	2	15.9	4	69.9
1" (25mm)	25	127	105	110	9.6	50.8	2	15.9	4	79.4
1.1/4" (32mm)	32	140	114	115	11.2	63.5	2	15.9	4	88.9
1.1/2" (40mm)	38	165	130	125	12.7	73	2	15.9	4	98.4
2" (50mm)	49	178	170	150	14.3	92.1	2	19.05	4	120.7
2.1/2" (65mm)	62	190	200	180	15.9	104.8	2	19.05	4	139.7
3" (80mm)	74	203	210	190	17.5	127	2	19.05	4	152.4
4" (100mm)	100	229	-	230	22.3	157.2	2	19.05	4	190.5
5" (125mm)	125	254	-	255	22.3	185.7	2	22.2	4	215.9
6" (150mm)	150	267	-	280	23.9	215.9	2	22.2	4	241.3
8" (200mm)	201	292	-	345	27	269.9	2	22.2	4	298.5



BRONEX OFFERS 150 5211 standard Electric Actuator operated Investment Casting WCB/CF8/CF8M/CF3M Ball valve in 3 pcs/2 pcs design. Engineered for multiple on/off operation in the down stream

Size Range: 1/2" to 8" (15 MM to 200 MM)

Ball Valve Specification	
Design And Manufacturer:	ASME B16.34/BS EN ISO 17292
Valve Face to Face Dimensions	ASME B16.10
Flange Standard Conformity	ASME B16.5 Class 150/300
Inspection & Testing	API 598

Item	Type of Test	Body	Seat
Valve Body Screwed	Hydraulic	450 PSIG	315 PSIG
Valve Body Flanged 150#	Hydraulic	450 PSIG	315 PSIG

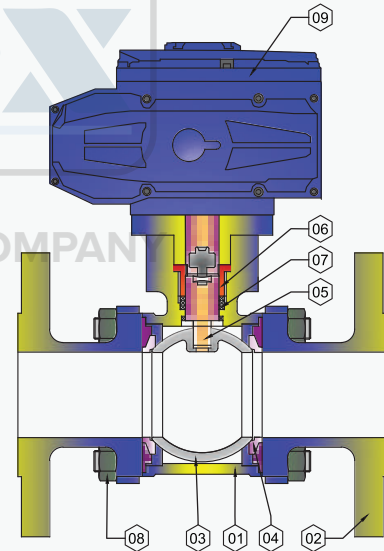
BRX MODEL ELECTRIC ACTUATOR

- ⇒ **Type:** On/Off type
- ⇒ **Voltage:** 24v, 110v, 220v, 380v, 415v
- ⇒ **Protection:** IP 67
- ⇒ LN Key type manual over ride.
- ⇒ In Built Position monitor

OPTIONS AVAILABLE

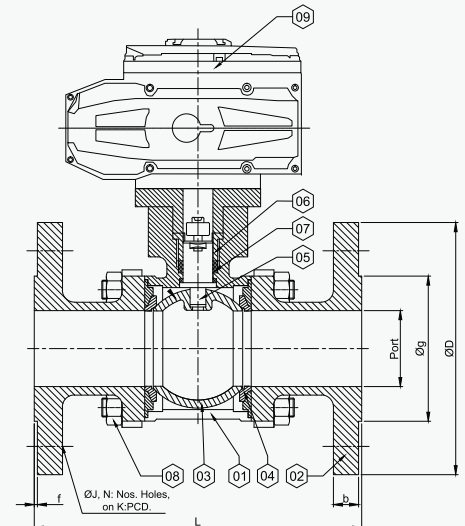
- ⇒ Hand wheel type manual over ride
- ⇒ Modulating type with LCD
- ⇒ Intelligent control for remote/local operation
- ⇒ Explosion Proof - NEX series.

NO.	Description	Material
1	Body	WCB / SS304 / SS316
2	End Connector	WCB / SS304 / SS316
3	Ball	SS304 / SS316
4	Ball Seat	PTFE / CFT / GFT
5	Stem Pin	AISI 410 / SS304 / SS316
6	Gland With Bush	SS 304
7	Stem Seat	PTFE / CFT / GFT
8	Stud & Nut	M.S. / S.S
9	Electrical Actuator	Standard



FLANGE END 150#

Valve Size	Port	L	ØD	b	Øg	f	ØJ	N	PCD
Tolerance	±1mm	±3mm	±2mm	±2mm	±1mm				±1.5mm
1/2" (15mm)	13	108	90	8	34.9	2	15.9	4	60.3
3/4" (20mm)	19	117	100	8.9	42.9	2	15.9	4	69.9
1" (25mm)	25	127	110	9.6	50.8	2	15.9	4	79.4
1.1/4" (32mm)	32	140	115	11.2	63.5	2	15.9	4	88.9
1.1/2" (40mm)	38	165	125	12.7	73	2	15.9	4	98.4
2" (50mm)	49	178	150	14.3	92.1	2	19.05	4	120.7
2.1/2" (65mm)	62	190	180	15.9	104.8	2	19.05	4	139.7
3" (80mm)	74	203	190	17.5	127	2	19.05	4	152.4
4" (100mm)	100	229	230	22.3	157.2	2	19.05	4	190.5
5" (125mm)	125	254	255	22.3	185.7	2	22.2	4	215.9
6" (150mm)	150	267	280	23.9	215.9	2	22.2	4	241.3
8" (200mm)	201	292	345	27	269.9	2	22.2	4	298.5



PNEUMATIC ACTUATOR OPERATED BUTTERFLY VALVE

BRONEX OFFERS Pneumatic actuator operated centric disc butterfly valve for HVAC & utilities. These valves are truly 'Fit & Forget Valve' : Which requires minimum maintenance. The body lines which also function as the soft seat, comes in integrally molded version & offers bi-directional sealing against vacuum upto the pressure of PN 10/PN 16

Size Range: 1.1/2" to 20" (40 MM to 500 MM)



Butterfly Valve Specification	
Valve Type	Centric Disc Butterfly Valve with Single Piece Rubber Lined Body
Body Type	Short Wafer Type
Seat Type	Integrally Molded with The Body (Replacable Seat On Request)
End Connection	Wafer Type Suit 150#
Pressure Rating	PN 10/PN 16
Oper. Temp. Range	-20°C to 120°C For Nitrile Seat (Depending On MOC)
Seat Leakage	Tight Shut Off

Item	Type of Test	Testing Pressure
Valve Body	Hydraulic	225 PSIG
Seat	Hydraulic	150 PSIG

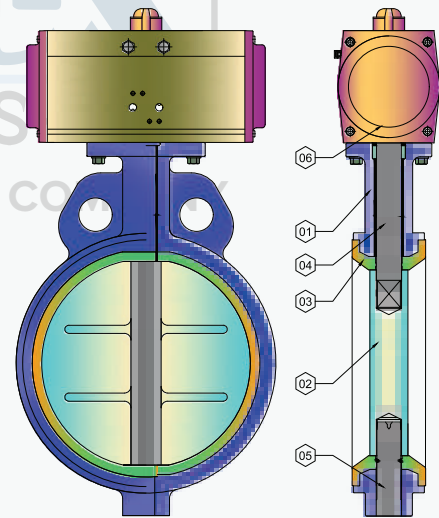
ACCESSORIES

- ⇒ On / Off Indicator
- ⇒ Namur Standard Solenoid Valve in all Standard Coil Voltage (Flameproof Coil On Request)
- ⇒ Pneumatic & Electro-Pneumatic Valve Positioner
- ⇒ Declutchable Manual Over-Ride
- ⇒ Limit Switch for On/Off Indicator at panel Board
- ⇒ Filter + Regulator Combination with Pressure Gauge
- ⇒ Air Lock Valve

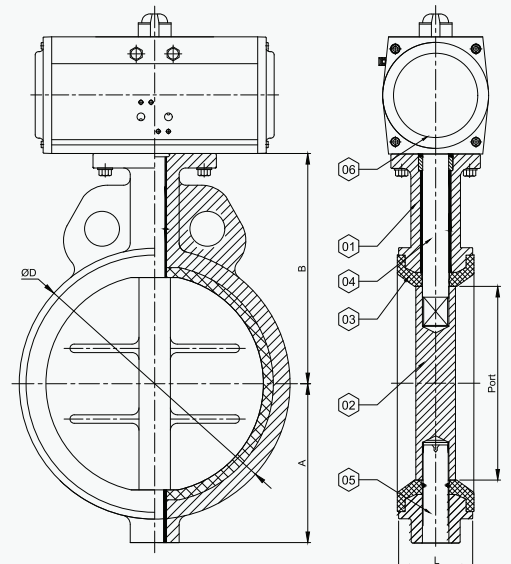
STANDARD

Design and Manufacture : API 609 Category A / IS.13095 / BSEN593
 Valve face to face dimension : Short wafer as per ISO 5752 TAB 5 / API 609 Category A ISO 5752 TAB 1 (BS 5155)
 Flange standard conformity : ASME B16.5 / 16.47 series A Class 150, BS 10 TAB D, E & F
 Inspection & Testing : API 598 / BS EN 12266 -1
 Top flange Drilling : ISO 5211

No.	Qty.	Particulars	Material
1	1	Body	Cast Iron / WCB / SS 304 / SS316
2	1	Disc	S. G. Iron / SS 304 / SS316
3	1	Moulded Seat	Nitrile / EPDM / Viton / Silicon
4	1	Shaft	AISI 410 / SS 304 / SS316
5	1	Bottom Pin	AISI 410 / SS 304 / SS316
6	1	Pneumatic Actuator	Standard



Valve Size	Port	L	ØD	A	B
Tolerance	±1mm	±3mm	±5mm	±5mm	±5mm
1 1/2" (40MM)	40	34	80	61	106
2" (50mm)	50	44	95	65	121
2 1/2" (65mm)	65	46	108	71	124
3" (80mm)	80	46	124	80	130
4" (100mm)	100	52	150	98.5	146.5
5" (125mm)	125	56	186	112.5	162
6" (150mm)	150	56	205	125	177
8" (200mm)	200	60	258.5	152.5	202
10" (250mm)	241	68	316	193	262
12" (300mm)	286	78	365	218	287
14" (350mm)	333	78	435	255	332
16" (400mm)	382	102	488	310	363
18" (450mm)	433	114	540	340	388
20" (500mm)	476	127	600	370	425



ELECTRICAL ACTUATOR OPERATED BUTTERFLY VALVE

BRONEX OFFERS motorized centric disc butterfly valve for HVAC & utilities. These valves are truly fit & forget valve : which requires minimum maintenance. The body lines which also function as the soft seat, comes in integrally molded version & offers bi-directional sealing against vacuum upto the pressure of PN 10/PN 16

Size Range: 1.1/2" to 20" (40 MM to 500 MM)



Butterfly Valve Specification	
Valve Type	Centric Disc Butterfly Valve with Single Piece Rubber Lined Body
Body Type	Short Wafer Type
Seat Type	Integrally Molded with The Body (Renewable Seat On Request)
End Connection	Wafer Type Suit 150# (PN 10/PN 16)
Pressure Rating	PN 10/PN 16 (PN 20 On Request)
Oper. Temp. Range	-20 °C to 180 °C For Nitrile Seat (Depending On MOC)
Seat Leakage	Tight Shut Off

BRX MODEL ELECTRIC ACTUATOR

- ⇒ **Type:** On/Off type
- ⇒ **Voltage:** 24v, 110v, 220v, 380v, 415v
- ⇒ **Protection:** IP 67
- ⇒ LN Key type manual over ride.
- ⇒ In Built Position monitor

OPTIONS AVAILABLE

- ⇒ Hand wheel type manual over ride
- ⇒ Modulating type with LCD
- ⇒ Intelligent control for remote/local operation
- ⇒ Explosion Proof - NEX series.

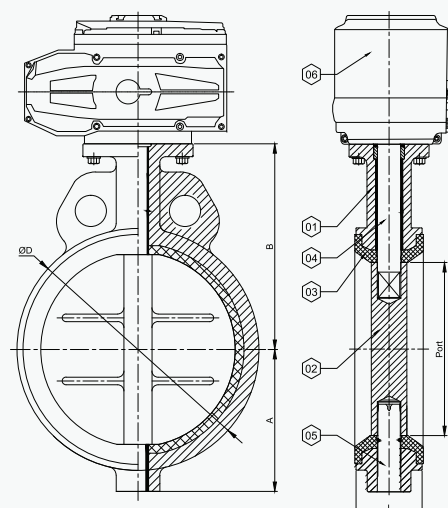
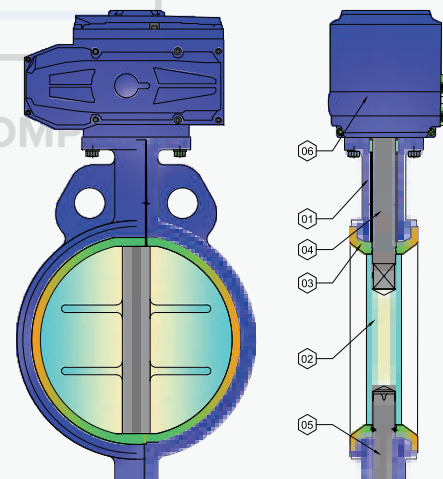
STANDARD

- Design and Manufacture : API 609 Category A / IS.13095 / BSEN593
- Valve face to face dimension : Short wafer as per ISO 5752 TAB 5 / API 609 Category A ISO 5752 TAB 1 (BS 5155)
- Flange standard conformity : ASME B16.5 / 16.47 series A Class 150, BS 10 TAB D, E & F
- Inspection & Testing : API 598 / BS EN 12266 - 1
- Top flange Drilling : ISO 5211

Item	Type of Test	Testing Pressure
Valve Body	Hydraulic	225 PSIG
Seat	Hydraulic	150 PSIG

No.	Qty.	Particulars	Material
1	1	Body	Cast Iron / WCB / SS 304 / SS316
2	1	Disc	S. G. Iron / SS 304 / SS316
3	1	Moulded Seat	Nitrile / EPDM / Viton / Silicon
4	1	Shaft	AISI 410 / SS 304 / SS316
5	1	Bottom Pin	AISI 410 / SS 304 / SS316
6	1	Electrical Actuator	Standard

Valve Size	Port	L	ØD	A	B
Tolerance	±1mm	±3mm	±5mm	±5mm	±5mm
1 1/2" (40MM)	40	34	80	61	106
2" (50mm)	50	44	95	65	121
2 1/2" (65mm)	65	46	108	71	124
3" (80mm)	80	46	124	80	130
4" (100mm)	100	52	150	98.5	146.5
5" (125mm)	125	56	186	112.5	162
6" (150mm)	150	56	205	125	177
8" (200mm)	200	60	258.5	152.5	202
10" (250mm)	241	68	316	193	262
12" (300mm)	286	78	365	218	287
14" (350mm)	333	78	435	255	332
16" (400mm)	382	102	488	310	363
18" (450mm)	433	114	540	340	388
20" (500mm)	476	127	600	370	425



PNEUMATIC ACTUATOR OPERATED SPHERICAL DISC BUTTERFLY VALVE



BRONEX Offers Pneumatic Actuator Operated Spherical Disc Valve Precised & Strong to 240 °C Temperature and 10 Kg/cm²/20 Kg/cm² Pressure

Size Range: 1 1/2" to 20" (40 MM to 500 MM)

Butterfly Valve Specification	
Construction Type	Double Eccentric Disc Design
Plate Mounting	Namur Standard
Pressure Rating	ANSI 150 Class
Temperature	-25 °C to 180 °C (Soft Seating) -25 °C to 600 °C (Metal to Metal Seating)
End Connection	Wafer Sandwiched/Lug Type
Media	Air/Gas/Water/Oil & Steam

APPLICATION

- ⇒ Hygienic Powder & Slurries, especially in Pharmaceutical Industries.
- ⇒ Chemical and Dyeing Fluids in Textile Processing Body Brine Waters & Oils.
- ⇒ Steam Lines, Air/Gas Lines / Vacuum.

Spherical Disc Valve has been Proved as Superior to Other Valves in Many Aspects, Particularly in...

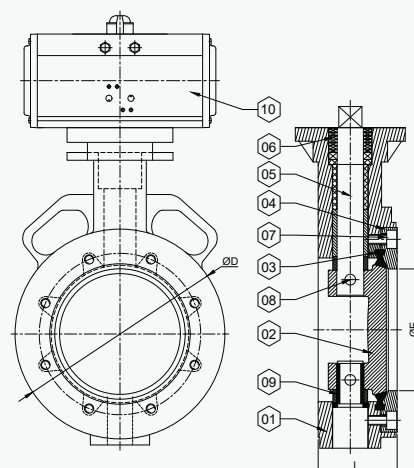
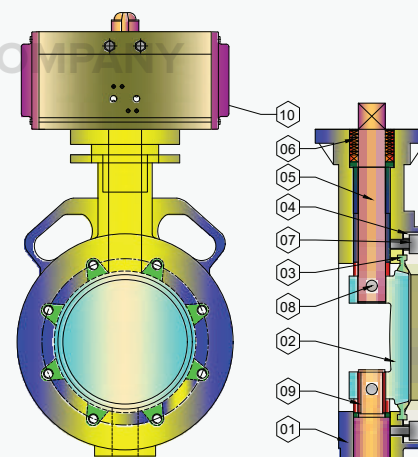
- ⇒ Weight ⇒ Space ⇒ Pressure Range
- ⇒ Multiple Operations
- ⇒ Maintenance Ease
- ⇒ Torque & Economy

ACCESSORIES

- ⇒ On/Off Indicator
- ⇒ Namur Standard Solenoid Valve in all Standard Coil Voltage (Flameproof Coil On Request)
- ⇒ Pneumatic & Electro Pneumatic Valve Positioner
- ⇒ Declutchable Manual Over-Ride
- ⇒ Limit Switch for On/Off Indicator at panel Board
- ⇒ Filter + Regulator Combination with Pressure Gauge
- ⇒ Air Lock Valve

No.	Qty.	Particulars	Material
1	1	Body	WCB / SS 304 / SS316
2	1	Disc	SS 304 / SS316
3	1	Replaceable Seat	PTFE / GFT / CFT / RPTFE
4	1	Retainer	M.S. / SS 304 / SS316
5	1	Shaft	AISI 410 / SS 304 / SS316
6	1	Gland Packing	PTFE / NBR / Viton
7	1	Retainer Bolt	S.S.
8	1	Disc Pin	SS 304 / Ss316
9	1	Shaft Bush	M.S. / SS 304 / SS316
10	1	Pneumatic Actuator	Standard

Valve Size	ØE	L	ØD
Tolerance	±1mm	±3mm	±5mm
1 1/2" (40MM)	38	42	82
2" (50mm)	50.8	45	95
2 1/2" (65mm)	60.6	48	108
3" (80mm)	72	48	127
4" (100mm)	100	54	159
5" (125mm)	123	57	186
6" (150mm)	143	57	217
8" (200mm)	192	64	270
10" (250mm)	239	71	322
12" (300mm)	290	81	382
14" (350mm)	335	92	436
16" (400mm)	387.5	102	495
18" (450mm)	425	114	540
20" (500mm)	475	127	595



Standards	Series 5150 (40 NB to 600 NB)
Design and manufacturing	API 609 Category B
Valve face to face dimensions	API 609 Category B / ANSI B 16.10
Flange Standard conformity	ANSI B 16.5 Class 150
Inspection & testing Standard	API 598 / ANSI FCI 70-2
Fire safe testing	API 607
Pressure temperature rating	ASME / ANSI B 16.34



BRONEX Offers Motorized Spherical Disc Valve Precised & Strong to 240° C/600° C Temperature and 10 Kg/cm²/20 Kg/cm² Pressure.

Size Range: 1.1/2" to 20" (40 MM to 500 MM)

Butterfly Valve Specification	
Construction Type	Double Eccentric Disc Design
Plate Mounting	Namur Standard
Pressure Rating	ANSI 150 Class
Temperature	-25 °C to 180 °C (Soft Seating) -25 °C to 600 °C (Metal to Metal Seating)
End Connection	Wafer Sandwiched/Lug Type
Media	Air/Gas/Water/Oil & Steam

BRX MODEL ELECTRIC ACTUATOR

- ⇒ **Type:** On/Off type
- ⇒ **Voltage:** 24v, 110v, 220v, 380v, 415v
- ⇒ **Protection:** IP 67
- ⇒ LN Key type manual over ride.
- ⇒ In Built Position monitor

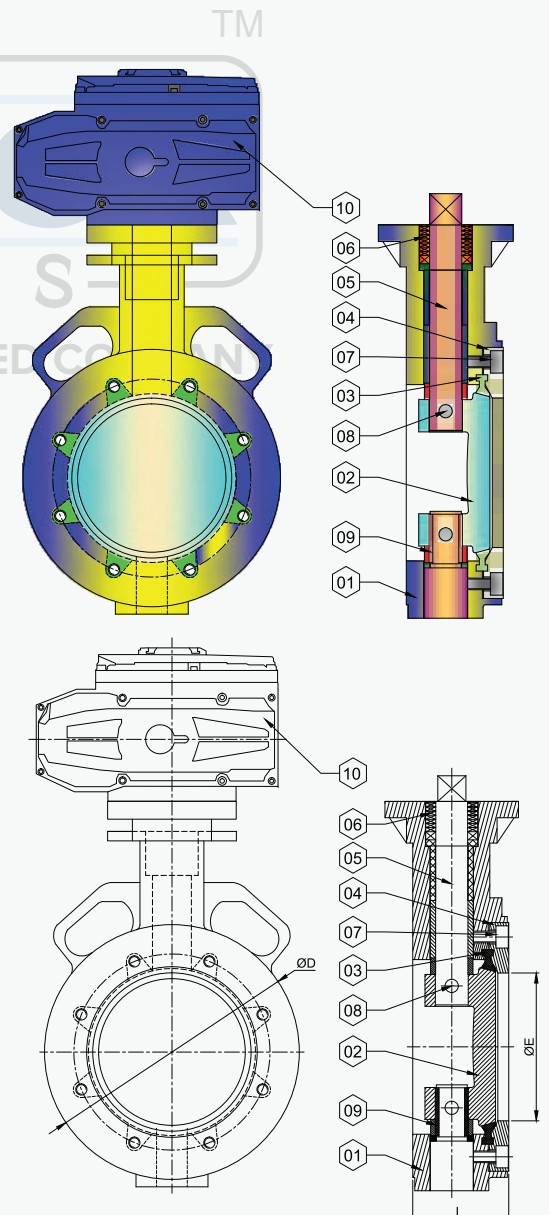
OPTIONS AVAILABLE

- ⇒ Hand wheel type manual over ride
- ⇒ Modulating type with LCD
- ⇒ Intelligent control for remote/local operation
- ⇒ Explosion Proof - NEX series.

No.	Qty.	Particulars	Material
1	1	Body	WCB / SS 304 / SS316
2	1	Disc	SS 304 / SS316
3	1	Replaceable Seat	PTFE / GFT / CFT / RPTFE
4	1	Retainer	M.S. / SS 304 / SS316
5	1	Shaft	AISI 410 / SS 304 / SS316
6	1	Gland Packing	PTFE / NBR / Viton
7	1	Retainer Bolt	S.S
8	1	Disc Pin	SS 304 / Ss316
9	1	Shaft Bush	M.S. / SS 304 / SS316
10	1	Electrical Actuator	Standard

Valve Size	ØE	L	ØD
Tolerance	±1mm	±3mm	±5mm
1 1/2" (40MM)	38	42	82
2" (50mm)	50.8	45	95
2 1/2" (65mm)	60.6	48	108
3" (80mm)	72	48	127
4" (100mm)	100	54	159
5" (125mm)	123	57	186
6" (150mm)	143	57	217
8" (200mm)	192	64	270
10" (250mm)	239	71	322
12" (300mm)	290	81	382
14" (350mm)	335	92	436
16" (400mm)	387.5	102	495
18" (450mm)	425	114	540
20" (500mm)	475	127	595

Standards	Series 5150 (40 NB to 600 NB)
Design and manufacturing	API 609 Category B
Valve face to face dimensions	API 609 Category B / ANSI B 16.10
Flange Standard conformity	ANSI B 16.5 Class 150
Inspection & testing Standard	API 598 / ANSI FCI 70-2
Fire safe testing	API 607
Pressure temperature rating	ASME / ANSI B 16.34



PNEUMATIC ACTUATOR OPERATED PHARMA WAFER TYPE BUTTERFLY VALVE



BRONEX Offers Specially BARStock design Pharma Butterfly Valve design for Powder application with be used in pharma machinery.

Size Range : 1" to 22"

ACCESSORIES

- ⇒ On / OFF Indicator
- ⇒ NAMUR Standard Solenoid Valve in
- ⇒ all Standard Coil Voltage (Flame Proof Solenoid Coil-On Request)
- ⇒ Pneumatic & Electro-Pneumatic valve positioner
- ⇒ Declutchable Manual Over-Ride
- ⇒ Limit Switches for On/Off Indication at Panel Board
- ⇒ Filter + Regulator Combination with Pressure Gauge
- ⇒ Air Lock Valve

PRESSURE / TEMPERATURE RATING

WORKING PRESSURE	MAX. 3 TO 4 KG/CM²
OPERATING TEMPERATURE	150 °C

Valve Size	Port	L	ØD	N	ØJ	PCD
Tolerance	±1mm	±3mm	±5mm		±5mm	
1" (25mm)	25	25	85	4	6.35	65
1 1/2" (40mm)	38	25	95	4	6.35	74
2" (50mm)	50	26	118	4	7.9	97
2 1/2" (65mm)	63	26	127	4	7.9	105
3" (80mm)	76	26	144	4	7.9	128
4" (100mm)	100	25	160	4	7.9	142
5" (125mm)	127	25	200	6	9.5	175
6" (150mm)	150	25	225	6	9.5	203
8" (200mm)	200	28	285	6	9.5	264
10" (250mm)	250	28	335	6	11	298
12" (300mm)	300	30	385	8	14.5	360
13" (325mm)	330	32	420	8	14.5	385
14" (350mm)	350	35	440	8	14.5	415
16" (400mm)	400	35	490	10	17.5	460
18" (450mm)	457	35	540	10	17.5	508
20" (500mm)	508	35	600	12	17.5	565
22" (550mm)	558	40	675	12	17.5	625

PNEUMATIC ACTUATOR OPERATED PHARMA BUTTERFLY VALVE

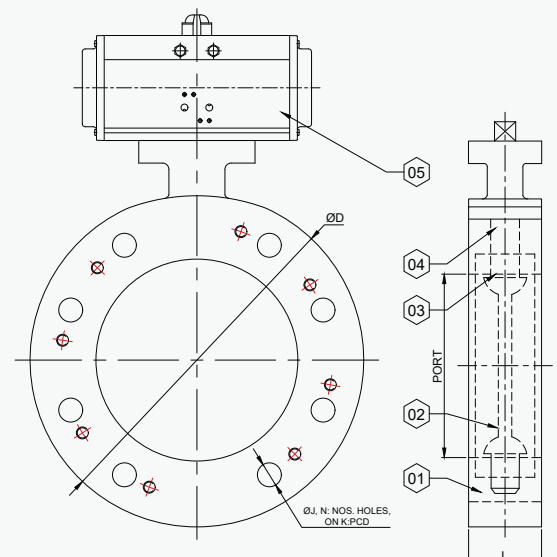
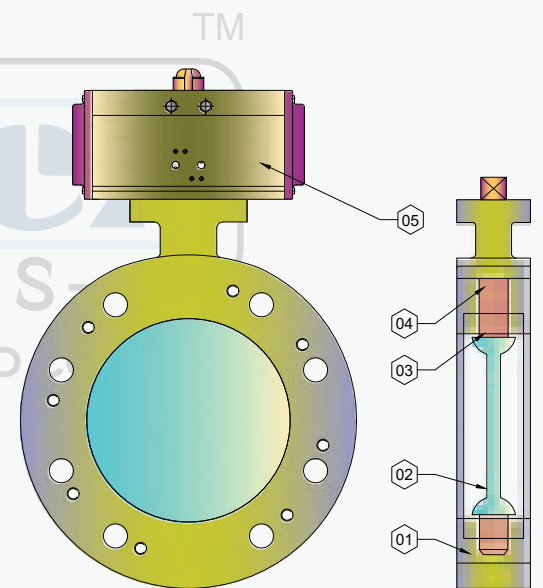
No.	Qty.	Particulars	Material
1	1	Body	SS 304 / SS316 / 316 L
2	1	Disc	SS 304 / SS316 / 316 L
3	1	Seat	Silicon
4	1	Shaft	SS 304 / SS316
5	1	Double Acting Pneumatic Actuator	STD

STAINLESS STEEL BUTTERFLY VALVES WITH PNEUMATIC ACTUATORS

Stainless steel butterfly valves are ideally suited for use with powder dispensing systems in the pharmaceutical, food and associated industries. The valve is designed for easy connection to range of powder processing equipment.

FEATURES

GMP compliant design Flexible interchangeable system is adaptable to multiple powder handling equipment 316L Stainless Steel contact parts provides Superior corrosion resistance. Reduces risk of contamination. Long service life.



ELECTRICAL ACTUATOR OPERATED PHARMA WAFER TYPE BUTTERFLY VALVE



BRONEX Offers Specially BARStock design Pharma Butterfly Valve design for Powder application with be used in pharma machinery.

Size Range : 1" to 22"

ACCESSORIES OPTION AVAILABLE

- ⇒ Hand wheel type manual over ride
- ⇒ Modulating type with LCD
- ⇒ Intelligent control for remote/local operation
- ⇒ Explosion Proof - NEX series.

PRESSURE / TEMPERATURE RATING

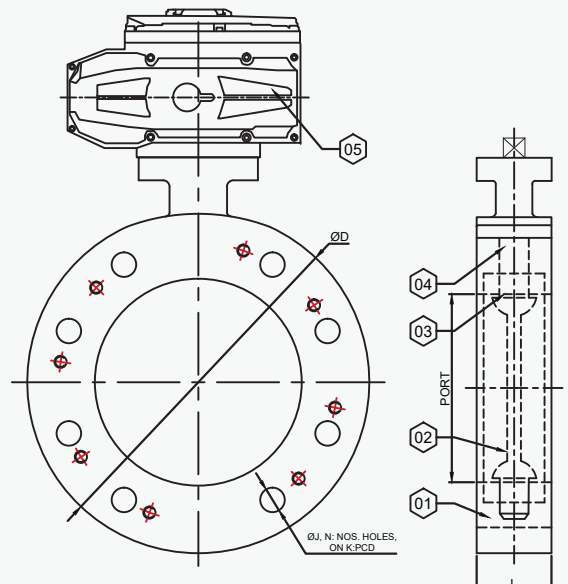
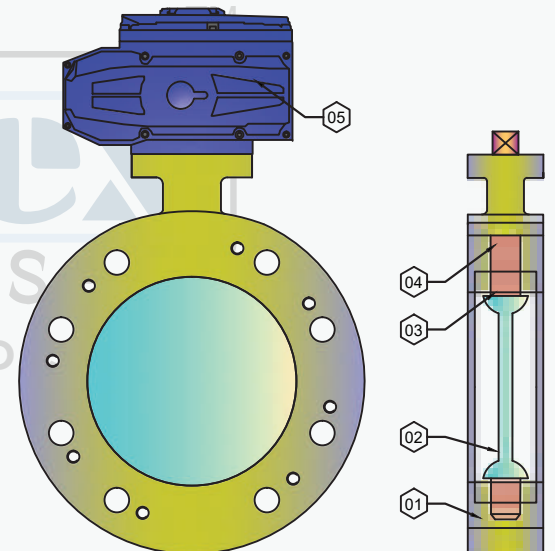
WORKING PRESSURE	MAX. 3 TO 4 KG/CM ²
OPERATING TEMPERATURE	150 °C

BRX MODEL ELECTRIC ACTUATOR

- ⇒ Type : On / Off type
- ⇒ Voltage : 24v, 110v, 220v, 380v, 412v
- ⇒ Protection : IP 67
- ⇒ L N Key type manual over ride.
- ⇒ In Built Position Monitor

No.	Qty.	Particulars	Material
01	1	Body	SS 304 / SS316
02	1	Disc	SS 304 / SS316
03	1	Seat	Silicon
04	1	Shaft	SS 304 / SS316
05	1	Electrical Actuator	Standard

Valve Size	Port	L	ØD	N	ØJ	K:PCD
Tolerance	±1mm	±3mm	±5mm	±5mm	±5mm	
2 1/2" (65mm)	65	26	178	4	19.05	139.7
3" (80mm)	80	26	190	4	19.05	152.4
4" (100mm)	98	32	163	4	11	140
6" (150mm)	150	30	227	6	11	202.8
8" (200mm)	200	32	279	6	11	255
10" (250mm)	250	32	354.5	6	11	327
12" (300mm)	300	35	405	8	13.5	378
14" (350mm)	350	40	527	12	25.4	469.9
16" (400mm)	400	40	577.9	12	25.4	520.7



STAINLESS STEEL BUTTERFLY VALVES WITH PNEUMATIC ACTUATORS

Stainless steel butterfly valves are ideally suited for use with powder dispensing systems in the pharmaceutical, food and associated industries. The valve is designed for easy connection to range of powder processing equipment.

FEATURES

GMP compliant design Flexible interchangeable system is adaptable to multiple powder handling equipment 316L Stainless Steel contact parts provides Superior corrosion resistance. Reduces risk of contamination. Long service life.

BRONEX offers The TC End ball valve consists of a stainless steel body that house a rotating ball. The rotating ball is sealed in the body with PTFE seat that either partially or fully encapsulates the ball. The valve is activated by a stainless steel handle that opens and closes the valve through a quarter turn. The valve can also be operated by an optional 1/4 turn pneumatic actuator. maintain constant pressure on the stem packing. The stem and packing design eliminate the possibility of stem becoming dislodged or blown out.



ACCESSORIES

- On / OFF Indicator
- NAMUR Standard Solenoid Valve in all Standard Coil Voltage (Flame Proof Solonoid Coil - On Request)
- Pneumatic & Electro - Pneumatic valve positioner
- Declutchable Manual Over - Ride
- Limit Switches for On / Off Indication at Panel Board
- Filter + Regulator Combination with Pressure Gauge
- Air Lock Valve

BRX MODEL ELECTRIC ACTUATOR

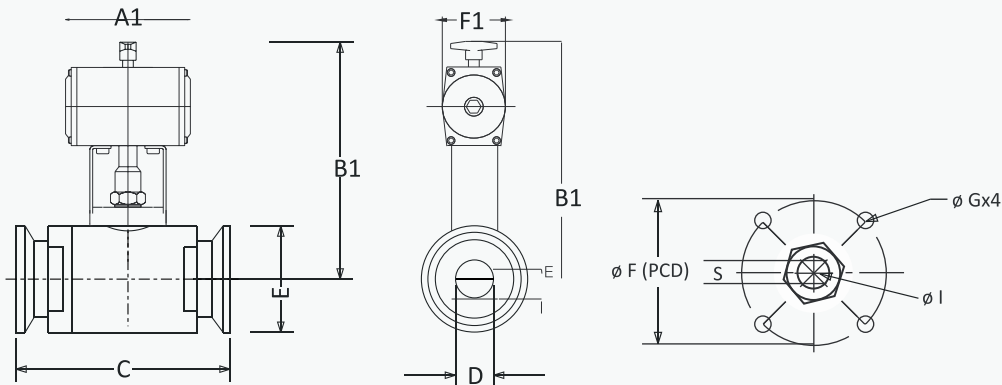
- ⇒ Type : On / Off type
- ⇒ Voltage : 24v, 110v, 220v, 380v, 415v
- ⇒ Protection : IP 67
- ⇒ L N Key type manual over ride.
- ⇒ In Built Position Monitor

FEATURES

- Material and Gasket :** 304/316 Stainless steel, silicon seats (Other Available)
- Available Size :** 0.50% 0.75.1.0.1.5.2.0.2.5.3.04.06.0" and 8"
- Surface Finish :** Mechanical sanitary polish
- Connections :** Sanitary Clamp, Butt weld
- Pressure :** 25 bar pressure
- Temperature/Vacuum :** Vacuum to 25 bar at 68°F (20°C), temperature rating : 15°F to 200°F (10°C to 95°C)
- Application :** Water, Steam, Oil, Chemicals

ACCESSORIES OPTION AVAILABLE

- ⇒ Hand wheel type manual over ride
- ⇒ Modulating type with LCD
- ⇒ Intelligent control for remote/local operation
- ⇒ Explosion Proof - NEX series.



DIMENSION

SIZE	C	Dø	Eø	øF PCD	GX4	øI	S	A1	B1	F1
1/2"	70	9.5	25	36	M6	8	5	141	145	65
3/4"	80	15.9	35	36	M6	10	7	141	150	65
1"	78	24	50.5	36	M6	10	7	169	155	65
1 1/2"	105	34.5	50.5	50	M6	12	9	169	175	65
2"	114	47.2	64	50	M6	12	9	197	205	80
2 1/2"	144	63	77.5	70	M8	20	12	197	250	80
3"	157	71	91	70	M8	24	16	233	350	122
4"	180	100	119	70	M8	28	20	272	375	122



UPVC Ball Valve



Pp Ball Valve

BRONEX Offers ISO 5211 Standard Pneumatic Rotary Actuator & Electric Operated Polypropylene & UPVC Body Ball Valve, engineered for multiple ON/OFF Operations in the Highly Corrosive Alkalis and Acidic Media.

Size Range: 1/2" to 3"

ADVANTAGES

- ⇨ NSF listed and material meet drinking water standard.
- ⇨ Smooth opening and closing thanks to a lower torque.
- ⇨ 100% pure virgin material, CaCo3 free (Chalk).
- ⇨ UV resistant powder added.
- ⇨ 100% pressure testing before leaving the factory.
- ⇨ Can be assembled with Pneumatic Actuators.

Ball Valve Specification

Working Pressure	7 Kg/cm²
Working Temperature	Upto 80 °C Max.
Ends	Screwed End

BRX MODEL ELECTRIC ACTUATOR

- ⇨ Type : On / Off type
- ⇨ Voltage : 24v, 110v, 220v, 380v, 415v
- ⇨ Protection : IP 67
- ⇨ L N Key type manual over ride.
- ⇨ In Built Position Monitor

ACCESSORIES OPTION AVAILABLE

- ⇨ Hand wheel type manual over ride
- ⇨ Modulating type with LCD
- ⇨ Intelligent control for remote/local operation
- ⇨ Explosion Proof - NEX series.

Size Range: 1/2" to 12" Screwed / Flanged

Body	Seat	Temperature
150 PSI	150 PSI	100° C

PNEUMATIC AND ELECTRIC ACTUATOR OPERATED PP & UPVC BUTTERFLY VALVE



UPVC Butterfly Valve



Pp Butterfly Valve

Size Range: 2" to 8"

Butterfly Valve Specification

Body	UPVC
Disc	Polypropylene
Pressure	7 Kg/cm²
Temperature	Upto 80 °C
Ends	Wafer Type

ADVANTAGES

- ⇨ Improved PP disc to enhance the performance.
- ⇨ Thickness body and deal to extend the service life.
- ⇨ Materials meet drinking water standard.
- ⇨ 100% pure virgin material, CaCO3 free (Chalk)
- ⇨ UV resistant powder added.
- ⇨ Can be assembled with pneumatic Actuator.

ACCESSORIES

- On / OFF Indicator
- NAMUR Standard Solenoid Valve in all Standard Coil Voltage (Flame Proof Solenoid Coil - On Request)
- Pneumatic & Electro - Pneumatic valve positioner
- Declutchable Manual Over - Ride
- Limit Switches for On / Off Indication at Panel Board
- Filter + Regulator Combination with Pressure Gauge
- Air Lock Valve

Size Range: 1.1/2" to 12"

MOC : PP
 Seals : NBR / EPDM
 Pressure : Upto 10 Kg/cm²
 Temp. :Upto 180 °C
 Ends : Wafer Type



BRONEX Offers ISO 5211 Standard Pneumatic Rotary Actuator Operated “3 way” Design Bar Stock Investment Casting CF8/CF8M/WCB Ball Valve, engineered for multiple Diverting / Mixing Operations in the down stream. TYPE : “T”. PORT/”L”. PORT/”X”. PORT In Full Bore/Reduce Bore.

Size Range: 1/2" to 4" Screwed / Flanged

FEATURES

- ⇒ Screwed & Investment Casting
- ⇒ Self adjusting stem packing
- ⇒ Available in 3 Way / 4 Way/5 Way L-Port/T-Port/X-Port
- ⇒ 4 Piece Ball Seats
- ⇒ Blow-Out Proof Stem Design / Anti Blow-Out Proof Stem Design
- ⇒ 100% air tested under water at 80-100 PSI

Ball Valve Specification

Pressure Rating	ASME 150/ASME 300 PN 16, PN 25
Temperature Range	Upto -25°C to 180 °C Max

STANDARD

Design And Manufacturing	ASME B16.34/BS EN 12516-1
Valve Face To Face Dimension	As Per Manufacturing
Flange Standard Conformity	ASME B16.5 Class 150
Inspection & Testing	API 598

FLOW PATTERNS



ACCESSORIES

- On / OFF Indicator
- NAMUR Standard Solenoid Valve in all Standard Coil Voltage (Flame Proof Solonoid Coil - On Request)
- Pneumatic & Electro - Pneumatic valve positioner
- Declutchable Manual Over - Ride
- Limit Switches for On / Off Indication at Panel Board
- Filter + Regulator Combination with Pressure Gauge
- Air Lock Valve

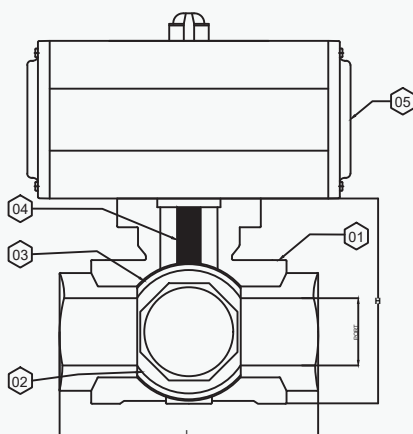
BRX MODEL ELECTRIC ACTUATOR

- ⇒ Type : On / Off type
- ⇒ Voltage : 24v, 110v, 220v, 380v, 415v
- ⇒ Protection : IP 67
- ⇒ L N Key type manual over ride.
- ⇒ In Built Position Monitor

ACCESSORIES OPTION AVAILABLE

- ⇒ Hand wheel type manual over ride
- ⇒ Modulating type with LCD
- ⇒ Intelligent control for remote/local operation
- ⇒ Explosion Proof - NEX series.

SCREWED



No.	Particulars	Material
01	BODY	SS 304 / SS 316
02	BALL	SS 304 / SS 316
03	SEAT	PTFE
04	STEM	SS 304 / SS 316
05	Pneumatic Actuator	Standerd

Valve Size	Port	L	H
Tolerance	±2mm	±3mm	±5mm
1/2" (15 mm)	13	72	57
3/4" (20 mm)	19	83	60
1" (25 mm)	25	89	76
1 1/2" (40 mm)	38	129	118
2" (50 mm)	49	153	124

PNEUMATIC AND ELECTRICAL ACTUATOR OPERATED ALLUMINIUM BUTTERFLY VALVE

BRONEX offers Pneumatic & Electric actuator operated Alluminium body kitz butterfly valve with EPDM rubber.



TECHNICAL STANDARDS

- ⇒ Manufacturing Standard : API 609 Category A/BS 5155 / MSS SP - 67 / C - 504
- ⇒ Face to Face : Short wafer as per ISO 5752 Tab 5 API 609 Category A
- ⇒ Top Flange Drilling : ISO 5211 Part II
- ⇒ Inspection and Testing Standard : API 598 / BS 6755 / FCI 70-2
- ⇒ Flange standard conformity : ANSI 150, DIN PN6 / 1

KEY FEATURES

- ⇒ On / Off indicator
- ⇒ Namur standard 5/2 & 3/2 way SOV in all standard coil voltage (Flame proof solenoid coil on request)
- ⇒ Pneumatic & Electro Pneumatic valve positioner.
- ⇒ Dec clutchable manual over ride.
- ⇒ Limit switch for on / off indication at panel board.
- ⇒ FRL Set with pressure gauge.
- ⇒ Volume Booster.
- ⇒ Air Lock Valve.
- ⇒ Quick Exhaust Valve.

BRX MODEL ELECTRIC ACTUATOR

- ⇒ Type : On / Off type
- ⇒ Voltage : 24v, 36v, 110v, 220v, 380v, 415v
- ⇒ Protection : IP 67
- ⇒ L N Key type manual over ride.
- ⇒ In Built Position monitor

ACCESSORIES OPTION AVAILABLE

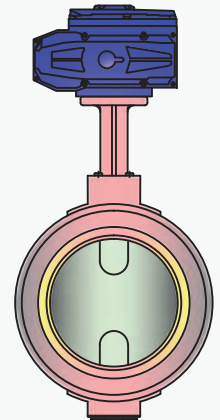
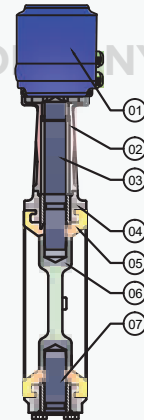
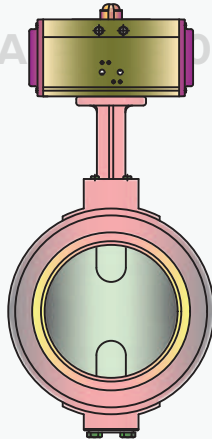
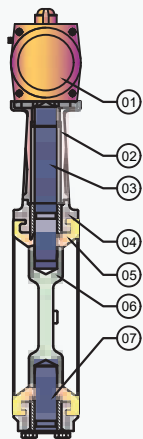
- ⇒ Hand wheel type manual over ride
- ⇒ Modulating type with LCD
- ⇒ Intelligent control for remote/local operation
- ⇒ Explosion Proof - NEX series.

MATERIALS

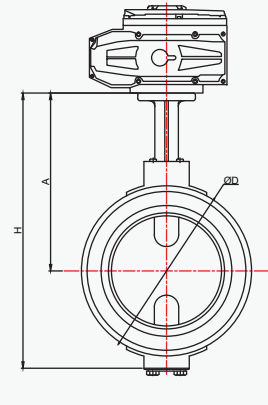
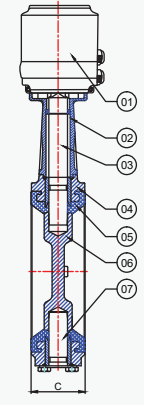
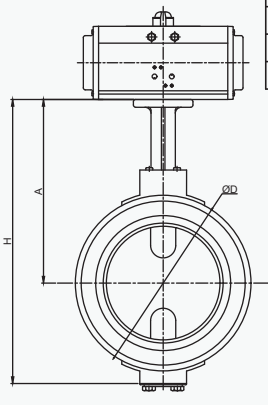
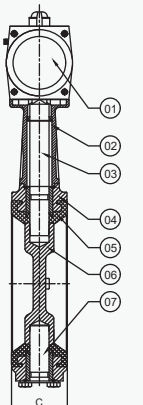
PART NAME	MATERIAL OPTION
Body	Aluminum Pressure Die Cast
Disc	CF8 (S.S. 304)
Stem	AISI 410 / AISI 304
Shaft	AISI 410 / AISI 304
Seat	EPDM
Valve Rating	PN 10
Body Pressure	225 PSIG
Seat Pressure	165 PSIG
Temperature	140°C

KEY FEATURES

- ⇒ Sleek size & space
- ⇒ Reduced Torque
- ⇒ Low Weight
- ⇒ Easy to maintain
- ⇒ Can be used for vast range of operation



Valve Size	C	ØD	L	H	A
1 1/2" (40mm)	33	78	125	156	106
2" (50mm)	43	92	180	198	132
2 1/2" (65mm)	46	117	180	215	141
3" (80mm)	46	128	180	232	149
4" (100mm)	53	148	180	254	160
5" (125mm)	56	184	230	317	195
6" (150mm)	56	214	230	342	207
8" (200mm)	61	257	326	389	236



Note : Since, constant worldwide advancement in technology, we keep our rights reserved to make changes time to time and in technical specification and dimensions without prior notice.



Make :	BRONEX
Size :	1" TO 10" (25MM TO 250MM)
Design :	ASA 150# / ASA 300#
ACTUATOR :	MULTIPLE SPRING, MS DIE COVER, NEOPRENE RUBBER ETC.
TYPE :	2/3 WAY, NORMALLY CLOSED / OPEN
MOC :	ASTM A 216GR. WCB (CAST STEEL), C.I.
BONNET :	MS FABRICATED
TRIMS :	AISI 410/304/316
PLUG :	AISI 140/304/316
TEMPERATURE :	UP TO 550C MAX
OPER.AIR PRE. :	1TO 3KG/Cm2
WORKING LINE PRE. :	3 TO 10 KG/Cm2
MEDIA :	HOT WATER. THERMIC FLUID, STEAM, AIR, GAS, ETC.
END :	FLANGED

Y-TYPE ANGLE SEAT CONTROL VALVE

BRONEX Offers Pneumatic Single Acting Actuator Operated Y Type Angle Seat Control Valve in Various End Connections like Screwed End, Flange End and Triclover End with MOC of CF8 and CF8M. It is available in Normally Open & Normally Closed Positions with Pressure Rating of PN16.

Size : 1/2" to 3" (15mm To 80mm)



TECHNICAL SPECIFICATION

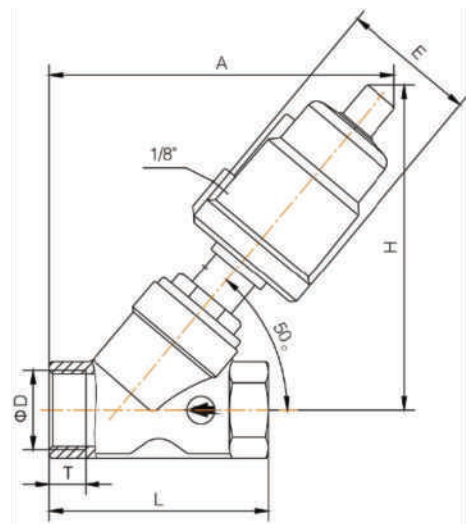
Actuator	:	IC CF8
Valve Body	:	IC CF8
Plug & Shaft	:	SS304
Seat And Seal	:	PTFE
Working Pressure	:	Upto 16 Bar
Max. Temperature	:	Upto 180° C
Lekage Class	:	Bubble Tight Shut Off
Pneu. Pressure	:	3.5 To 7 Bar
Ends	:	Screwed BSP Or Flange End 150#
Media	:	AIR, WATER, STEAM, GAS, OIL, CHEMICAL

Application:

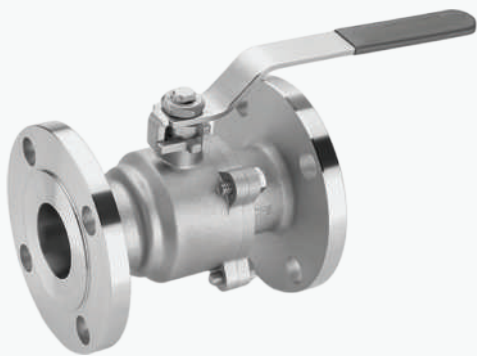
Water Treatment, Beverages, Steam / Gas, Chemicals, Textile Printing and Dyeing, AutoClave Machines.

Size (mm)	ØD	L	E	A	H	PORT
15	1/2"	68	60	130	128	1/8" BSP
20	3/4"	75	60	140	133	1/8" BSP
25	1"	90	60	150	140	1/8" BSP
40	1.5"	125	75	190	178	1/8" BSP
50	2"	151	75	200	190	1/8" BSP
65	2.5"	195	95	260	230	1/8" BSP
80	3"	198	115	335	320	1/8" BSP

All Dimensions are in mm

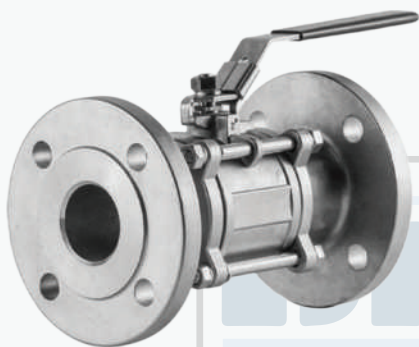


TWO PIECE BALL VALVE



SIZE	15 mm to 300 mm
PRESSURE RATING	150#, 300#, 600#, 900#, 1500# (Other Pressure Rating are available on Request)
BODY/TRIMS MATERIALS	Cl, WCB, CF8, CF8M, CF3M, Hastelloy C/B (Other Material Grade are available on Request)
SEAT	PTFE, Reinforced PTFE, PEEK, & Metal seated
TYPE	Regular Full bore, Hollow Ball & Solid Ball
SPECIAL FEATURES	ISO-PAD with gland flange design for Actuator and Gear box mounting, Extended Bonnet, Fire safe, Anti-static, Anti Cavity design available
OPERATION TYPE	Hand lever, Gear box, Actuator (Pneumatic, Electric & Hydraulic)
END CONNECTION	Flanged end ANSI B 16.5, 150#, 300#, (RF, RTJ & TG). Table - F (Other Class are available on Request)
COMPLIES TO	BS EN ISO 17292(BS 5351), DIN STD also available on request
TESTING STANDARD	API 598

THREE PIECE BALL VALVE



SIZE	15 mm to 300 mm
PRESSURE RATING	150#, 300#, 600# (Other Pressure Rating are available on Request)
BODY/TRIMS MATERIALS	Cl, WCB, CF8, CF8M, CF3M, Hastelloy C/B (Other Material Grade are available on Request)
SEAT	PTFE, Reinforced PTFE, PEEK, & Metal seated
TYPE	Regular Full bore, Hollow Ball & Solid Ball
SPECIAL FEATURES	Anti-static design available
OPERATION TYPE	Hand lever, Gear box, Actuator (Pneumatic, Electric & Hydraulic)
END CONNECTION	Flanged end ANSI B 16.5, 150#, 300#, (RF, RTJ & TG). Table - F (Other Class are available on Request)
COMPLIES TO	BS EN ISO 17292(BS 5351)
TESTING STANDARD	API 598

AN ISO 9001:2015 CERTIFIED COMPANY

SCREW END / SOCKET END BALL VALVE



DESIGN	One Piece & Three Piece Design
SIZE	15 mm to 50 mm
PRESSURE RATING	150# (Other Pressure Rating are available on Request) & 800# for Forged Steel
BODY/TRIMS MATERIALS	Cl, WCB, CF8, CF8M, CF3M, Hastelloy C/B (Other Material Grade are available on Request)
SEAT	PTFE, Reinforced PTFE, PEEK, & Metal seated
TYPE	Regular Full bore & Reduce Bore in Forged Steel
SPECIAL FEATURES	ISO-PAD with gland flange design for Actuator and Gear box mounting, Fire safe Design Available and Extended Bonnet
OPERATION TYPE	Hand lever
END CONNECTION	Screwed End / Socket Weld End
COMPLIES TO	BS EN ISO 17292(BS 5351)
TESTING STANDARD	API 598

THREE WAY BALL VALVE



SIZE	15 mm to 150 mm
PRESSURE RATING	150#, 300# (Other Pressure Rating are available on Request)
BODY/TRIMS MATERIALS	WCB, CF8, CF8M, CF3M, Hastelloy C/B (Other Material Grade are available on Request)
SEAT	PTFE, Reinforced PTFE, PEEK, & Metal seated
TYPE	L-port, T-port,
SPECIAL FEATURES	ISO-PAD with gland flange design for Actuator and Gear box mounting, Anti-static, Anti Cavity design available
END CONNECTION	Flanged end ANSI B 16.5, 150#, 300#, (RF, RTJ & TG). Table - F (Other Class are available on Request)
COMPLIES TO	API 6D
TESTING STANDARD	API 598

CENTRE DISC BUTTERFLY VALVE



SIZE	40 mm to 2400 mm
PRESSURE RATING	PN6, PN10, PN16 & 150#
BODY MATERIALS	Cl, WCB (Other Material Grade are available on Request)
DISC	DI, CF8, CF8M, Duplex, Even Rubber Lined (Other Material Grade are available on Request)
STEM	AISI SS410, AISI SS304, 17-4PH, etc.
SPECIAL FEATURES	It is Bi-Directional Valve with both Replaceable Sleeve & Rubber Lining Design Available
OPERATION TYPE	Hand lever, Gear box it assist Proportion Opening and locking at desired opening
END CONNECTION	Wafer, Lug & Flange type suitable to mount between 150# glanges
COMPLIES TO	BS 5155 (EN 593) & API 609
TESTING STANDARD	API 598

SPHERICAL DISC BUTTERFLY VALVE



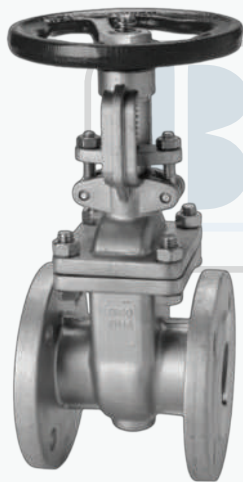
SIZE	40 mm to 1500 mm
PRESSURE RATING	PN6, PN10, PN16, 150# & 300#
BODY MATERIALS	WCB, CF8, CF8M, CF3M, Hastelloy C/B (Other Material Grade are available on Request)
DISC	CF8, CF8M, CF3M, Hastelloy C/B (Other Material Grade are available on Request)
SEAT	PTFE, Reinforced PTFE, PEEK & Metal seated
SPECIAL FEATURES	Double Offset Provide low torque for opening, less rubbing of seats & thus decrease wear and tear and increase life
OPERATION TYPE	Hand lever, Gear box & Actuator
END CONNECTION	Wafer Type suitable to mount between 150# & 300# flanges (RF, RTJ & TG)
COMPLIES TO	API 609
TESTING STANDARD	API 598

DOUBLE FLANGE ECCENTRIC DISC BUTTERFLY VALVE



SIZE	100 mm to 700 mm
PRESSURE RATING	PN6, PN10, PN16
BODY MATERIALS	DI, WCB, CF8, CF8M (With or without Rubber lining)
DISC	DI, CF8, CF8M, Duplex (With or without Rubber lining)
SEAT	NBR, EPDM, VITON
SPECIAL FEATURES	Less torque, Better shut-off, Longer service life
OPERATION TYPE	Gearbox, Pneumatic Actuator, Electric Actuator, Hydraulic Power pack
END CONNECTION	Flanged end suitable to mount between ANSI B16.47 & AWWA C207
COMPLIES TO	AWWA and EN Standards
TESTING STANDARD	EN 12266-1 & 2

GATE VALVE



SIZE	15 mm to 1500 mm
PRESSURE RATING	150# & 300# (Other Pressure Rating are available on Request)
BODY MATERIALS	CI, WCB, CF8, CF8M, CF3, CF3M (Other Material Grade are available on Request)
TRIM	13% Cr. + Stellite, CF8, CF8M (Other material grades are available on request) (Rubber encapsulated on request)
TYPE	OS & Y type Rising Spindle
OPERATION	Hand wheel, Gearbox or Electrical Actuator
SPECIAL FEATURES	Bellow seal suitable for high pressure & high temperature service, low torque
END CONNECTION	Flanged end ANSI B 16.5, 150#, 300# (RF, RTJ & TG) (Other Class are available on Request)
COMPLIES TO	API 600 / BS 1414
TESTING STANDARD	API 598

KNIFE EDGE GATE VALVE



SIZE	50 mm to 750 mm
PRESSURE RATING	150# (Other Pressure Rating are available on Request)
BODY/TRIM MATERIALS	CI, WCB, CF8, CF8M, CF3M, Hastelloy C/B (Other Material Grade are available on Request)
SPECIAL FEATURES	Metal seated, softseated, Unidirectional, Bi-Directional, Bolted bonnet also available in cavity free design
OPERATION	Hand Wheel, Gearbox or Electrical Actuator
END CONNECTION	Wafer & Lug end, RF ANSI B16.5, 150# (Other class are available on request)
COMPLIES TO	MSS SP-81
TESTING STANDARD	MSS SP-81

GLOBE VALVE



SIZE	15mm to 1200 mm
PRESSURE RATING	150#, 300# (Other Pressure Rating are available on Request)
BODY MATERIALS	DI, WCB, CF8, CF8M, CF3M, Hastelloy C/B (Other Material Grade are available on Request)
TRIM	13% Cr. + Stellite, CF8, CF8M (Other material grades are available on request)
TYPE	Globe type design
OPERATION	Hand Wheel, Gearbox & Actuator
SPECIAL FEATURES	1) Suitable for high pressure & high temperature service 2) Low Torque 3) Bellow seal & Extended Bonnet
END CONNECTION	Flanged end ANSI B 16.5, 50#, 300# (RF, RTJ & TG (Other Class are available on Request)
COMPLIES TO	BS 1873
TESTING STANDARD	API 598

FORGED VALVE



SIZE	15 mm to 50 mm
PRESSURE RATING	800#, 1500# & 2500#
BODY MATERIALS	ASTM A105, F304 & F316
TRIMS MATERIALS	SS410, F304, F316 & Stellite
OPERATION	Manual Operated
END CONNECTION	Screwed End, Socket Weld
COMPLIES TO	Gate Valve - API 602/ASME B16.34 Globe Valve - BS 5352/ASME B 16.34 Check Valve - BS 5352/ASME B16.34
TESTING STANDARD	BS EN 12266 (BS 6755-1) / API 598

PP AND UPVC BALL VALVE



SIZE	1/2" TO 4" SCREWED TO BSP/NPT. 1/2" TO 10" FLANGED.
PRESSURE RATING	150 W.O.G at 73° F
MATERIALS	UPVC, CPVC, PP, PVDF LINED
SEAT	PTFE, Glass filled PTFE, CFT.
OPERATION TYPE	hand lever, gearbox, actuator (pneumatic, electric)
END CONNECTION	SOCKET (ANSI, JIS, CNS, DIN) / THREADED (NPT, BSPT, BSPF) / FLANED (10K, 150LB, ASME B16.5)
OPERATION TEMPERATURE	PVC (0-55°C), CPVC (0-95 °C), PP (20 °C to 120 °C)
WORKING PRESSURE	150 PSI
MFG STANDARD	ASTM D1784 virgin upvc resin
TESTING STANDARD	API 598

PP AND UPVC BUTTERFLY VALVE



SIZE	1 1/2" TO 24"
MOC	PP/UPVC/CPVC/PVDF LINED
OPERATION TYPE	hand lever, gearbox, actuator (pneumatic, electric)
REPLACEABLE SEAT	Nitrile (NBR)/EPDM/VITON
ENDS	Wafer/Lug Type/FLANGED
DESIGN & MANUFACTURING STD	ANSI/DIN

TC END BALL VALVE



MFG. DESIGN	BAR STOCK BODY
AVAILABLE SIZE	1/2" TO 4"
MATERIAL OF CONSTRUCTION	SS304 / SS 316 / SS 316 L
SEAR MATERIAL	PTFE / CFT / GET / SILICON FOOD GRADE
SURFACE FINISH	MIRRIOR FINISH / MAT FINISH
PRESSURE	UP TO 10 BAR
TEMPRATURE	-20° C TO 120° C
MEDIA	WATER / OIL / SOFT CHEMICAL / STEAM
END CONNECTION	TRI CLOVER / ONE SIDE TC / BUTT WELD / SCREWED END
OPERATION	LEVER / GEAR / ACTUATOR (PNEUMATIC & ELECTRIC)

TC END BUTTERFLY VALVE



MFG. DESIGN	BAR STOCK BODY
AVAILABLE SIZE	1" TO 20"
MATERIAL OF CONSTRUCTION	SS304 / SS 316 / SS 316 L
SEAR MATERIAL	SILICON FOOD GRADE / PTFE / CFT / GET
SURFACE FINISH	MIRRIOR FINISH / MAT FINISH
PRESSURE	UP TO 10 BAR
TEMPRATURE	-20° C TO 120° C
MEDIA	WATER / OIL / SOFT CHEMICAL / STEAM
END CONNECTION	TRI CLOVER / ONE SIDE TC / BUTT WELD
OPERATION	LEVER / GEAR / ACTUATOR (PNEUMATIC & ELECTRIC)

WAFER TYPE PHARMA BUTTERFLY VALVE



SIZE	1" to 22"
WORKING PRESSURE	MAX 3 TO 4 KG/CM2
OPERATION TEMPERATURE	150°C
BODY	316L
DISC	316L
SEAT	Silicon
BRACKET	SS
APPLICATION	Powder dispensing system in the Pharmaceutical, food and associated industries.

ALLUMINIUM KITZ BUTTERFLY VALVE



SIZE	1.5" TO 8"
MANUFACTURING STANDARD	API 609 Category A/BS 5155/ MSS SP-67 /C -504
FACE TO FACE	Short wafer as per ISO 5752 Tab 5 API 609 Category A
TOP FLANGE DRILLING	ISO 5211 Part ii Inspection and Testing Standard:API 598 BS 6755/FCI 70-2
FLANGE STANDARD CONFORMITY	ANSI 150, DIN PN6/16
KEY FEATURES	Sleek size & space, Reduced Torque, Low Weight, Easy to maintain, Can be used for vast range of operations.
BODY	Aluminum Pressure Die Cast
DISC	CF8 (S.S. 304)
STEAM	AISI 410/AIS 304
SHAFT	AISI 410/AISI 304
SEAT	EPDM
VALVE RATING	PN 10
BODY PRESSURE	225 PSIG
SEAT PRESSURE	165 PSIG
TEMPERATURE	140°C

PTFE LINED BUTTERFLY VALVE



SIZE	2" TO 6"
FACE TO FACE	BS 5155
BODY/FLANGE STANFARD	ANSI CLASS 150#, DIN PN16, JIS CLASS 10K
BODY	GRADED CI/DI/WCB/SS+PFA/FEP/PVDF/PP LINED
DISC	WCB/SS+PFA/FEP/PVDF/PP LINED
SPINDLE(INTEGRAL DISC)	WCB/SS+PFA/FEP/PVDF/PP LINED
SEAT	PFA/FEP/PTFE
BEARING BUSH	PTFE
LEVER	MS/SS FABRICATED
FASTENERS	MS/SS
HYDRO TEST PRESSURE	14 kg/cm ² (metal body with lining)
LINNING THICKNESS	3 TO 5 MM (min to max)



AN ISO 9001:2015 CERTIFIED COMPANY



+91 7041 180018



bronexvalves1@gmail.com, info@bronexvalves.com



No-1, plot No-57 Al-Gani Market, Al-Habib Society,
Nabinagar, b/h Gudluck Beral Market, Danilimda, Ahmedabad,380028.



www.bronexvalves.com

Applications: Suitable for water, steam, gas, air, thermal in all industries areas including textile, cement, petrochemical, oil & gas, pulp and paper, steel industries, pharmaceutical, power plant, food & beverages, waste water treatment plants, automobiles and many more.